

# Integrator<sup>®</sup>

## Extended Range

*Delivering Group 4/5 ISR capabilities  
in an affordable, long-range  
Group 3 UAS*



### UNCREWED AIRCRAFT SYSTEMS



**Integrator ER uses satellite communications (SatCom) to extend flight range beyond line of sight (BLOS), expanding target sets, reducing the logistical footprint and enhancing personnel safety.**

### KEY FEATURES & BENEFITS

#### Theater-relevant ranges

- Up to 2,000 nmi point-to-point range (e.g. from Guam to Okinawa)
- Up to 13 hrs time on station at 500 nmi
- Ideal for dispersed island chains, complex coastlines, and open ocean operations

#### Expanded target set

- Expand tactical UAS access to previously unreachable targets

#### Multi-mission flexibility

- 50 pounds of payloads across up to 10 bays for true MULTI-INT mission sets
- Persistent high-resolution imagery, SIGINT, comms relay, electronic warfare, targeting, and kinetics options
- Rapid reconfigurability in austere environments
- Weather awareness and resilience to wet weather operation

#### SatCom advances

- Proliferated Low-Earth Orbit (PLEO) constellation and GEO SatCom options available
- Utilizes latest global constellations for reliable, high-throughput data rates
- Commercial and certified encryption options

#### Fewer bases, reduced footprint

- Reduce downrange footprint and centralize control of dispersed assets
- No-sacrifice VTOL kit preserves endurance, range, payloads and power
- Expeditionary VTOL enables island-hopping, ship-to-shore operations

#### Enhanced personnel safety

- Keep personnel at safer distances from dangerous environments
- Long endurance reduces deck cycles, minimizing risk and maximizing value



30 YEARS  
OPERATIONAL  
EXPERIENCE

1.5 MILLION  
FLIGHT HOURS

GLOBAL  
OPERATIONS

SYSTEM  
MODULARITY

SERVICES,  
ACQUISITION  
AND FMS

**LEARN MORE | Contact us at [solutions@insitu.com](mailto:solutions@insitu.com)**  
**[insitu.com](https://www.insitu.com)**

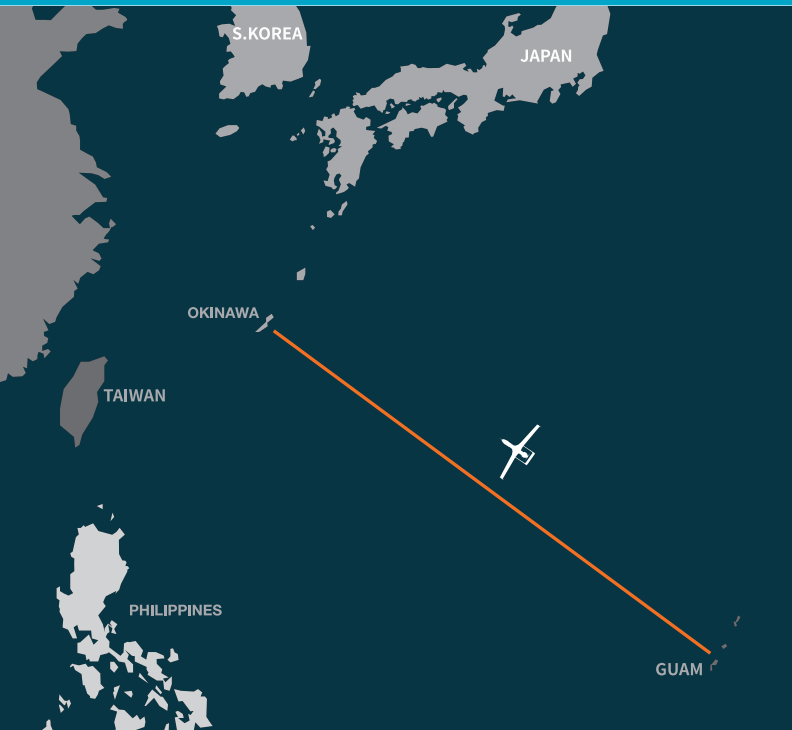
This document consists of basic marketing information subject to change without notice. Non-Technical / Administrative Data Only. Not subject to EAR or ITAR Export Regulations. Items subject to U.S. export controls require a valid license in accordance with EAR or ITAR, as applicable. Copyright © 2025 Insitu. All rights reserved.

DU040125

# Integrator<sup>®</sup>

## Extended Range

*Seamless integration  
of tailorable, multi-mission payloads  
for unparalleled flexibility*



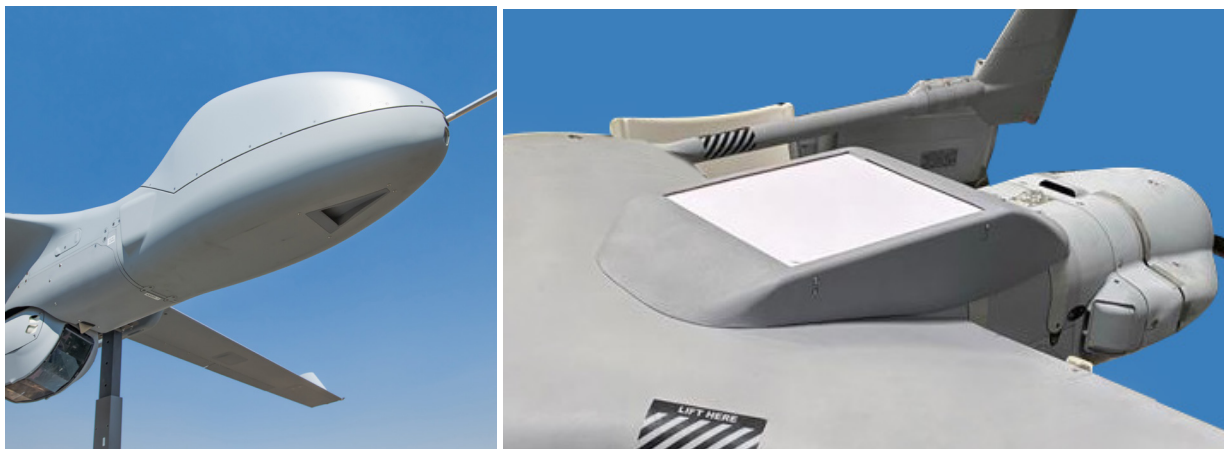
Up to 2,000 nmi point-to-point range

### Integrator Extended Range Time on Station (TOS) Estimates

Gross Takeoff Weight: 175 lbs • FMV only

- 50 nm 27 hrs
- 200 nm 23 hrs
- 300 nm 18 hrs
- 400 nm 16 hrs
- 500 nm 13 hrs

### SPECIFICATIONS



Multiple SatCom options available including solutions for GEO (Geosynchronous Orbit), MEO (Medium-Earth Orbit) and PLEO (Proliferated Low-Earth Orbit)

#### SIZE AND WEIGHT

- Length: 8.2 ft / 2.5 m
- Wingspan: 15.7 ft / 4.8 m
- Max takeoff weight: 175 lb / 79 kg
- Max payload weight: 50 lb / 22.7 kg

#### PERFORMANCE

- Endurance: 27.5 hours
- Ceiling: 20,000 ft / 6,000 m
- Max horizontal speed: 90+ knots / 46 m/s
- Cruise speed: 55 knots / 28 m/s
- Engine: EFI using JP-5/JP-8 fuel

#### SENSOR AND PAYLOAD OPTIONS

- EO telescope (high-zoom, day FMV)
- MWIR/EO dual sensor (day & night FMV)
- Wide-area maritime search (AI-assisted)
- Laser designator, pointer, rangefinder
- Synthetic Aperture Radar (SAR)
- Alternative Navigation (Alt-Nav)
- Kinetics
- SIGINT, EW, comms relay, and more
- Rapid integration of other customer-specific payloads available