

Integrator with PT-6

Automated Maritime Wide-Area Search

*Search, interrogate, prosecute—
from one long endurance platform*



UNMANNED AIRCRAFT SYSTEMS

KEY FEATURES & BENEFITS



PT-6 with Integrator is a comprehensive smart sensor solution that combines state-of-the-art, automated wide-area search capabilities with high-powered zoom optics, across multiple spectral bands—all on a long-endurance platform that delivers unparalleled, around-the-clock maritime ISR capabilities.

Automated wide-area search

- Scans wide areas for objects of interest, processes imagery on the edge, and provides real-time information to operators, networked payload, or mission management system.
- Designate automated search areas and detection thresholds based on mission parameters to optimize sensor/software operation.

Increased field of view

Automatically scans in a step-stare pattern that sweeps across the flight track to provide significantly increased search coverage area.

Day and night search

Equipped with HD RGB and HD LWIR sensors. Nighttime heat/object detections, particularly in maritime environments, are aided by the contrast of thermal signatures against a uniform body of water.

Improved operator efficiency

PT-6 automates the labor-intensive role of searching for small targets of interest in large areas, often in challenging conditions.

Multi-mission capabilities

Enables a wide variety of mission capabilities, from maritime search and ISR to land-based tactical intelligence, inspection and mapping, custom object detection, change detection, and more.

The most versatile UAS in its class

Integrator offers 24+ hours of endurance and is designed to easily integrate modular, field-swappable, multi-INT payloads (up to 40 pounds across six bays) with plenty of onboard power to spare.



1.4 MILLION
FLIGHT HOURS

50
GLOBAL SITES
OF OPERATION

MODULAR
FAMILY OF
SYSTEMS

SERVICES,
ACQUISITION
AND FMS

LEARN MORE | Contact us at solutions@insitu.com
insitu.com

This document consists of basic marketing information subject to change without notice.
Items subject to U.S. export controls require a valid license in accordance with EAR or ITAR, as applicable.
Copyright © 2023 Insitu. All rights reserved.

DU110623

Integrator with PT-6

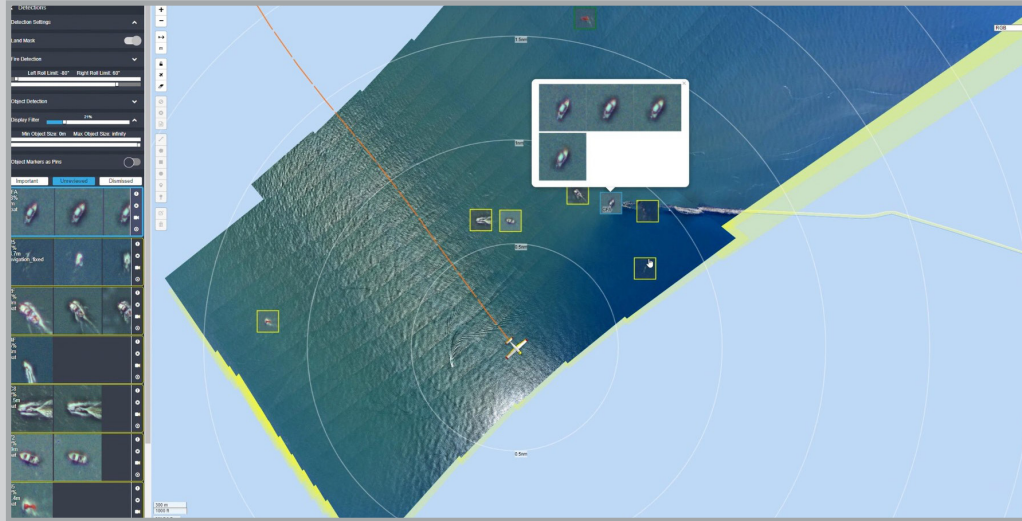
Automated Maritime Wide-Area Search

Versatile, smart sensor designed to meet ISR mission demands



PT-6 SPECIFICATIONS

Overwatch AI software automatically controls sensor operation to continually scan a search area; processes data in real-time on the edge; and notifies the operator or networked payload with geolocated image data of detected objects that warrant further review.



PAYLOAD SWAP:

- Size: 23.6 in x 3.75 in (95 mm x 600 mm)
- Weight: 5.5 lb (2.5 kg)
- Power: 42 W

MOUNTING: Standard CG bay mounting

ONBOARD SENSORS:

- Sensor 1: RGB Color
 - 12.3 MP (4096 x 3000)
 - Rolling shutter
- Sensor 2: HD LWIR
 - 1.3 MP (1280 x 1024)
 - 8-14 micron

COMMAND CONTROL: Ethernet

USER INTERFACE: Browser-based, hosted on payload

GPS INS:

- Novatel survey-grade GPS
- Single L1 antenna

STABILIZATION: Active roll

PT-6 DETECTION RANGES AND COVERAGE EXAMPLES (*Assumes 55 kts)

Target Size	Altitude (AGL)	Detection Range	Search Swath	Coverage Rate (per hour)
2 m life raft	1000 ft (305 m)	2 NM (3.7 km)	4 NM (7 km)	220 NM ² (755 km ²)
19 m vessel	5000 ft (1500 m)	10 NM (18.5 km)	20 NM (37 km)	1100 NM ² (3773 km ²)
50+ m vessel	5000 ft (1500 m)	17 NM (31.5 km)	34 NM (63 km)	1870 NM ² (6414 km ²)



HD LWIR

12 MP RGB Color

180° Rolling Imagers



PT-6 is developed and produced by Overwatch Imaging