

BlackKite®

Day/Night Wide-Area Motion Imagery (WAMI) for Integrator

Easy-to-share actionable data
for faster decision-making day and night



UNMANNED AIRCRAFT SYSTEMS

KEY BENEFITS & FEATURES

Persistent wide-area monitoring day and night

Monitors and analyzes areas of up to 2.5 miles (4 km) in diameter anywhere within line-of-sight range of the GCS.

Simultaneous target detection

Detects, tracks and labels geographically dispersed still or moving targets.

Forensic analysis

Operators can rewind imagery in forensic mode to trace targets to their points of origin and review events.

Onboard data storage

Stores up to 11 hours of mission data on board the vehicle supporting examination of real-time or historical data.

Supports multiple sensor operators

Control up to 10 independent video streams, providing situational awareness while following targets moving in different directions. Geospatial and temporal bookmarking allows users to mark and share locations.

Automated detection alerts

User-defined “watchboxes” provide sensor operators with automated alerts when items of interest move in/out for real-time tracking.

Information sharing

Transmits imagery (chipouts) to handheld devices such as Android.

Cross cueing

Supports cross cueing to Integrator’s primary FMV turret for higher resolution inspection.



BlackKite streams geo-located imagery to multiple users for real-time and forensic analysis. The mid-wave infrared (MWIR) wide-area motion imagery (WAMI) system is capable of monitoring a city-sized area both day and night.

1.3 MILLION
FLIGHT HOURS

50
GLOBAL SITES
OF OPERATION

MODULAR
FAMILY OF
SYSTEMS

SERVICES,
ACQUISITION
AND FMS

LEARN MORE | Contact us at solutions@insitu.com
insitu.com

This document consists of basic marketing information subject to change without notice.
Items subject to U.S. export controls require a valid license in accordance with EAR or ITAR, as applicable.
Copyright © 2022 Insitu. All rights reserved.

DU081122

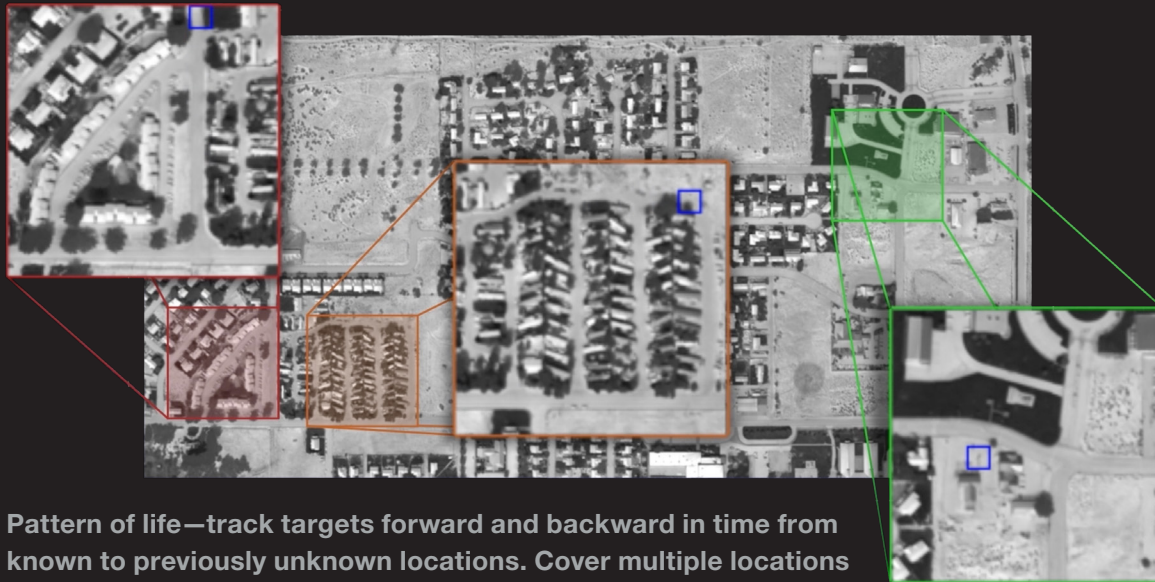
BlackKite[®]

Day/Night Wide-Area Motion Imagery
(WAMI) for Integrator

Cost-effective, rapidly deployable, reliable



SPECIFICATIONS



Pattern of life—track targets forward and backward in time from known to previously unknown locations. Cover multiple locations simultaneously with on-demand video across coverage area.

- **Operational altitude:**
5,000–15,000 ft / 1,500–4,500 m AGL
- **Area of coverage at 5000 ft / 1500 m AGL:**
.5 NM² / 1.7 km² (1.5 km diameter)
- **Area of coverage at 12,000 ft / 4000 m AGL:**
3.5 NM² / 12 km² (4 km diameter)
- **Ground Sample Distance (GSD)
at 5000 ft / 1500m AGL:** 8.5 inches / 0.22 m
- **GSD at 12,000 ft/ 4000 m AGL:** 23 inches / 0.6 m
- **Camera:** 3 megapixels
- **Refresh rate:** 1 Hz
- **Cross-cueing:** Yes
- **Viewer windows:** multiple unique streaming video windows
- **GCS/SCS Archive Length:**
160 hours, expandable
- **Onboard Archive Length:**
~5 hrs (4 TB drive), ~11 hrs (8 TB drive)
- **Transmission to mobile devices:** Yes
- **Compact embedded processing:**
north-up rendering, real-time and DVR streaming and full-mission storage.
- **Internal data link:** fully integrated, single Line Replaceable Unit (LRU)



*Developed and produced by Logos Technologies.
Integrated and tested in collaboration between
Insitu and Logos Technologies.*

