

Dual Imager with MWIR 3.6

Electro-optical and mid-wave infrared
(MWIR) imagery in a single sortie



UNMANNED AIRCRAFT SYSTEMS

KEY BENEFITS & FEATURES

One turret, combined capabilities

- Electro-optical (EO)
- Mid-wave infrared (MWIR) imager

Monitor stationary and moving objects

Autonomous object tracking and simultaneous video stream viewing lets operators quickly identify and maintain positive identification for both stationary and moving subjects of interest.

Choose viewing options

Imagery can be viewed either side by side with multi-imager, multi-feed (MIMF) or the turret can send one stream with a picture-in-picture view.

Independent zoom

Operators control the zoom level of each imager independently.

EO/IR imagery overlay

Improves daytime and nighttime image interpretation for enhanced situational awareness.

Autonomous object tracking in both views

- Laser pointer (optional)
- Embedded Alticom Vision™ imaging system that eliminates in-flight vibrations



Combines an EO imager with an MWIR thermal camera in one turret to capture real-time daytime and nighttime intelligence without interrupting the mission.

Dual Imager produced in collaboration with Hood Tech Corporation, Vision Inc.



1.3 MILLION
FLIGHT HOURS

50
GLOBAL SITES
OF OPERATION

MODULAR
FAMILY OF
SYSTEMS

SERVICES,
ACQUISITION
AND FMS

LEARN MORE | Contact us at solutions@insitu.com
insitu.com

This document consists of basic marketing information subject to change without notice.
Items subject to U.S. export controls require a valid license in accordance with EAR or ITAR, as applicable.
Copyright © 2020 Insitu. All rights reserved.

DU120420

Dual Imager with MWIR 3.6

Persistent and superior imagery
day and night with a single turret



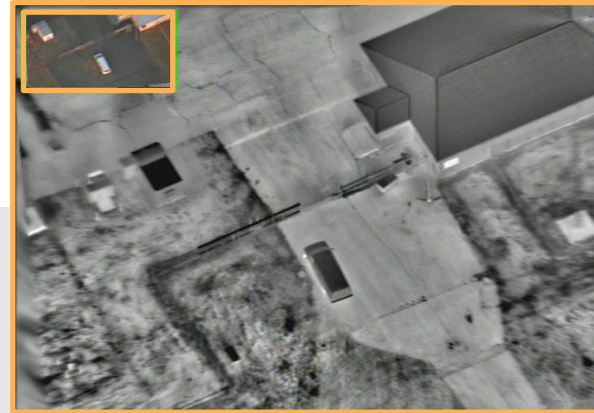
Inset provides
situational awareness
from MWIR



EO daytime imagery
of subject of interest

Multi-imager multi-feed (MIMF)

View output from two video streams
simultaneously



MWIR thermal imagery
of surveillance area

Inset shows subject
of interest

SPECIFICATIONS

GIMBAL

- Tilt: 80° forward; 45° back
- Roll: Endless 360°
- Slew rate: 50°/sec
- Capability: MWIR imager, EO imager and optional laser pointer

IMAGERS:

	MWIR	EO
▪ Wavelength	3–5 μm	400–900 nm
▪ Horizontal field-of-view	1.7°–22°	1.1°–31.5°
▪ Zoom	13x continuous	30x continuous
▪ Pixels	640 x 480	1280 x 720

LASER POINTER

- 830 nm, 150 mW, 1.0 mrad
- Class 3B laser product. Invisible laser radiation. Avoid exposure to beam.

